

A-TOM500

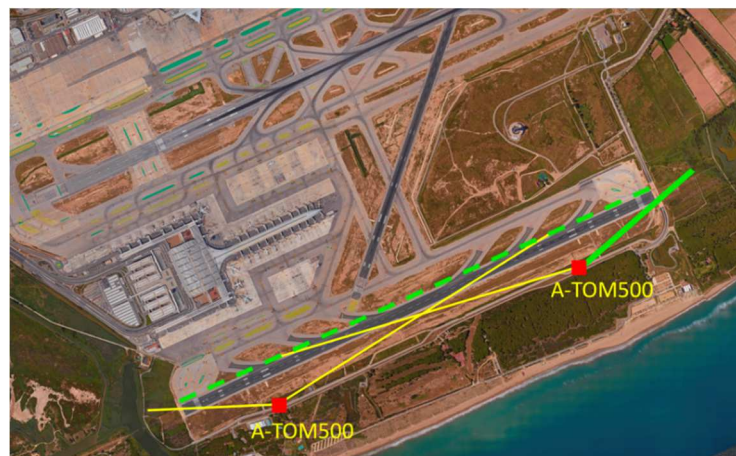
Automatic Laser Bird Repellent System

Class 2M
eye-safe
certified



Key characteristics of A-TOM500 system:

- Automatic scanning of the runway
- 24/7 non-stop operation
- Scanning range : up to 2,600m (8,530ft) of runway
- Compliant with ICAO annex 14
- Remote control and monitoring
- Automatic proof of activity recording
- Easy remote maintenance



THE MOST EFFECTIVE WAY TO REPEL BIRDS AWAY FROM RUNWAYS

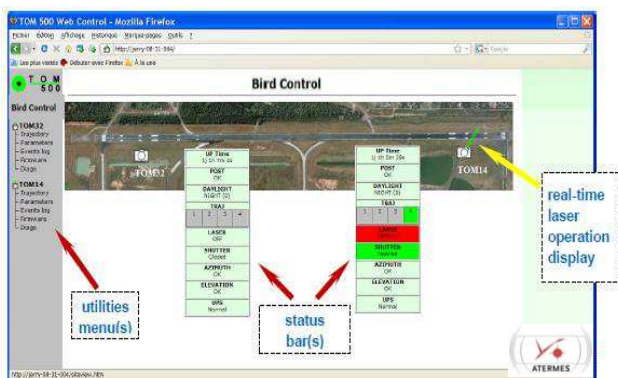
Overview:

- A-TOM500 uses LORD INGENIERIE'S unique innovative laser know-how to scare birds away, taken over by ATERMES.
- A-TOM500 is the only bird repellent system that has been developed with specialized ornithologists for the aviation community.
- By nature, birds are quite sensitive to visual signs. Field measurements demonstrate that birds are primarily sensitive to the green color.
- With A-TOM500, birds perceive and see a big green stick coming towards them, as a "green predator". The only choice to avoid this stick is to escape and fly away.
- By constantly scanning the runway, the A-TOM500 laser repellent system creates a permanent threat for birds. The runway becomes a permanent hostile area for them. They don't come back again and again.



Benefits:

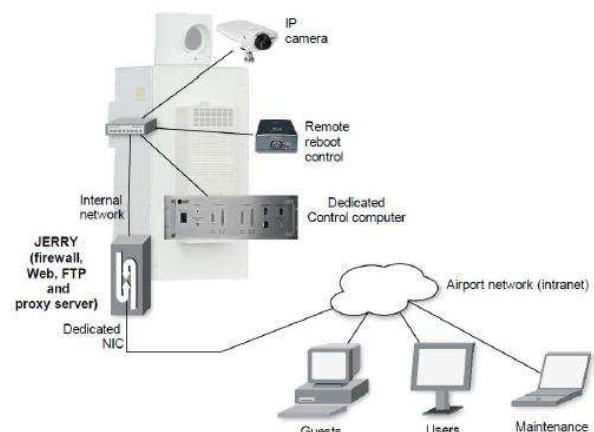
- No bird habituation to such visual technology. A bird may get used to noise and sounds, but won't ever face up to the "green predator". It's the same reflex as a bird flying away as a car approaches.
- No visual annoyance for pilots: the laser is not visible outside a 15-degree cone: approved by pilots during the 3 years real world testing on both civilian and military airports.
- Silent: no hassle such as those caused by traditional pyrotechnic or repetitive acoustic means.
- Modern and user friendly system: Airside Operations can monitor, control and communicate with the system remotely through Ethernet and/or wireless communication.
- The A-TOM500 system integrates a remote maintenance diagnostic tool providing day to day proof of activity and long term lifetime support.



Technical characteristics:

- Beam diameter: 152 mm, collimated
- Dimensions: 1,215 (L) x 800 (W) x 2,150 (H) mm
- Weight: 470 kg (1,040 lbs)

«The state-of-art bird repellent technology»



ATERMES

4, avenue des Trois Peuples
78180 Montigny-le-Bretonneux _ FRANCE
Tel: +33 (0) 130 120 140 – Fax: +33 (0) 130 600 403
E-mail: A-TOM500@atermes.fr
www.atermes.fr



web



V03 EN